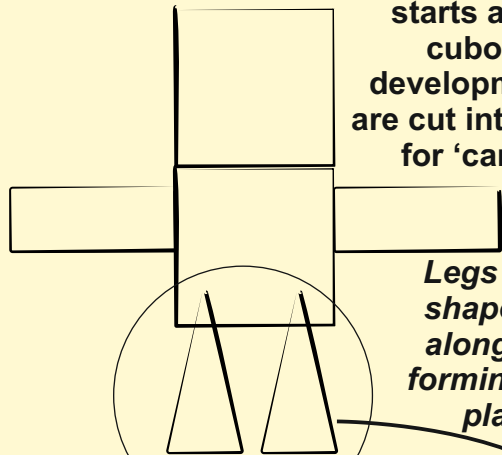


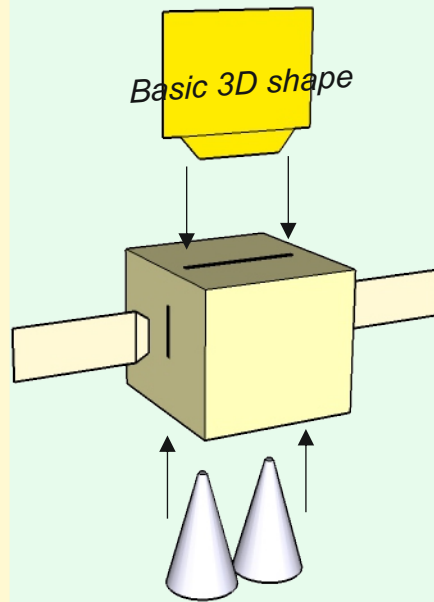
# FANTASY PAPER TOY CHARACTERS - BASIC DESIGN

This fantasy character starts as a basic cuboid net / development. Slots are cut into the sides, for 'card' arms.



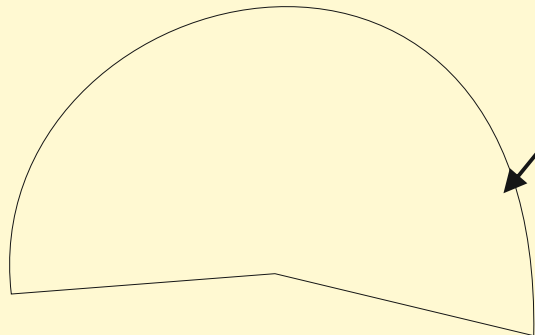
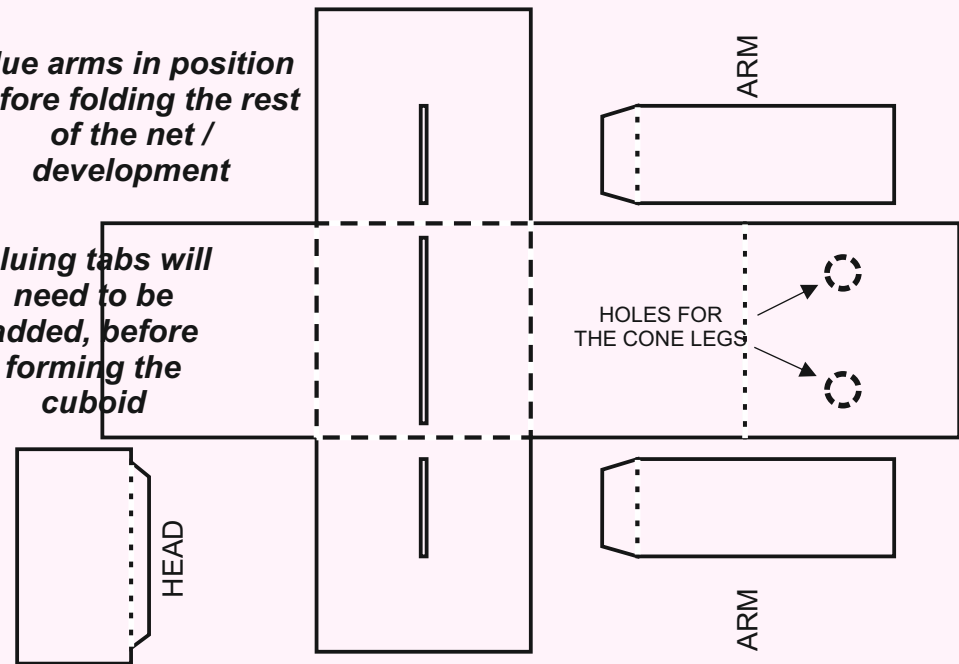
Legs are cone shapes, glued along a seam, forming a stable platform.

Basic 3D shape



Glue arms in position before folding the rest of the net / development

Gluing tabs will need to be added, before forming the cuboid

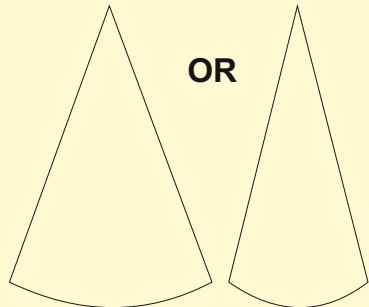


Decoration in the form of images / drawings can be added to produce a fantasy character.

When the cuboid body, head arms and cone legs are glued together, simply add card glasses, hair etc.... for decoration and to produce the fantasy character.

TRY THE GRAPHICS SECTION OF [www.technologystudent.com](http://www.technologystudent.com) for detailed revision materials

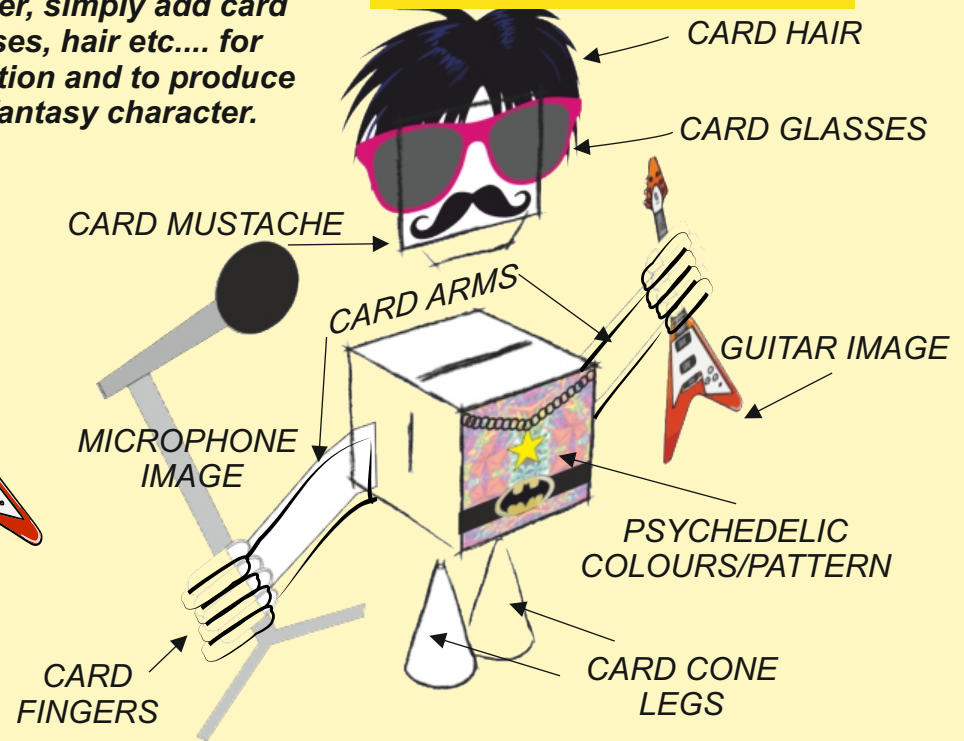
Overlap the cone and glue the excess, producing the width of base/circle, you want to achieve.



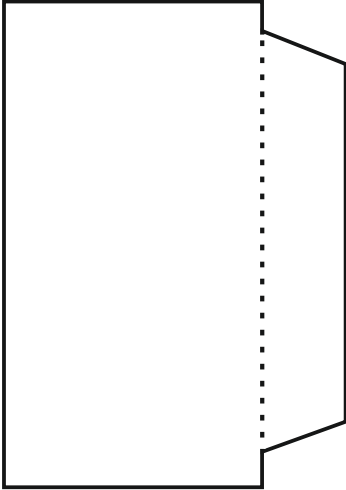
OR



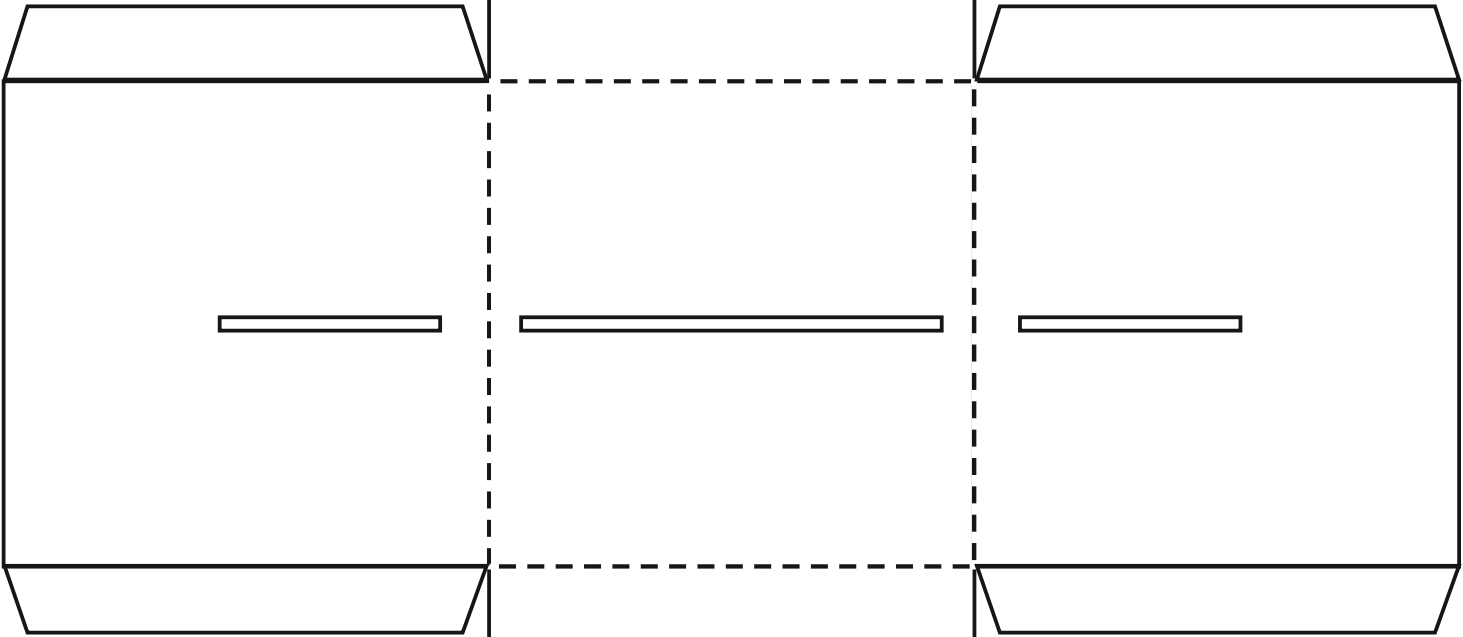
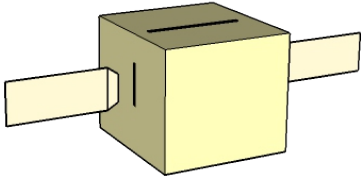
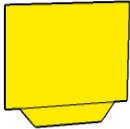
The arms can be shaped to your own design



FANTASY PAPER TOY CHARACTERS.



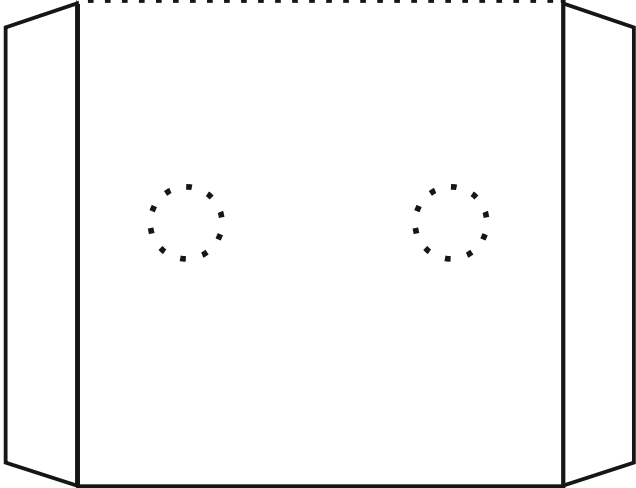
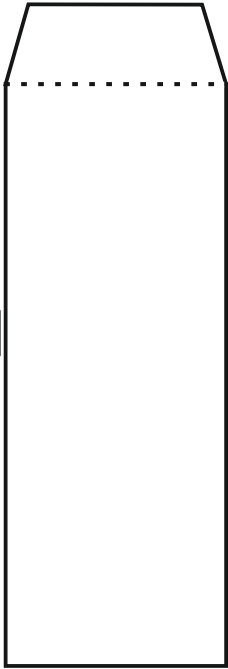
HEAD



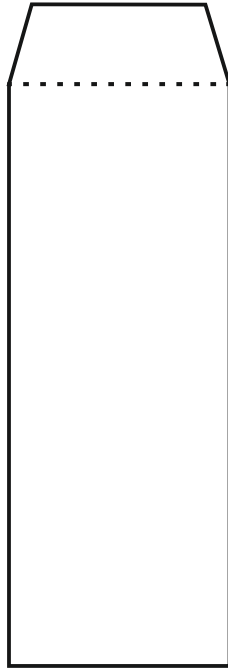
DESIGN YOUR OWN ARM SHAPES

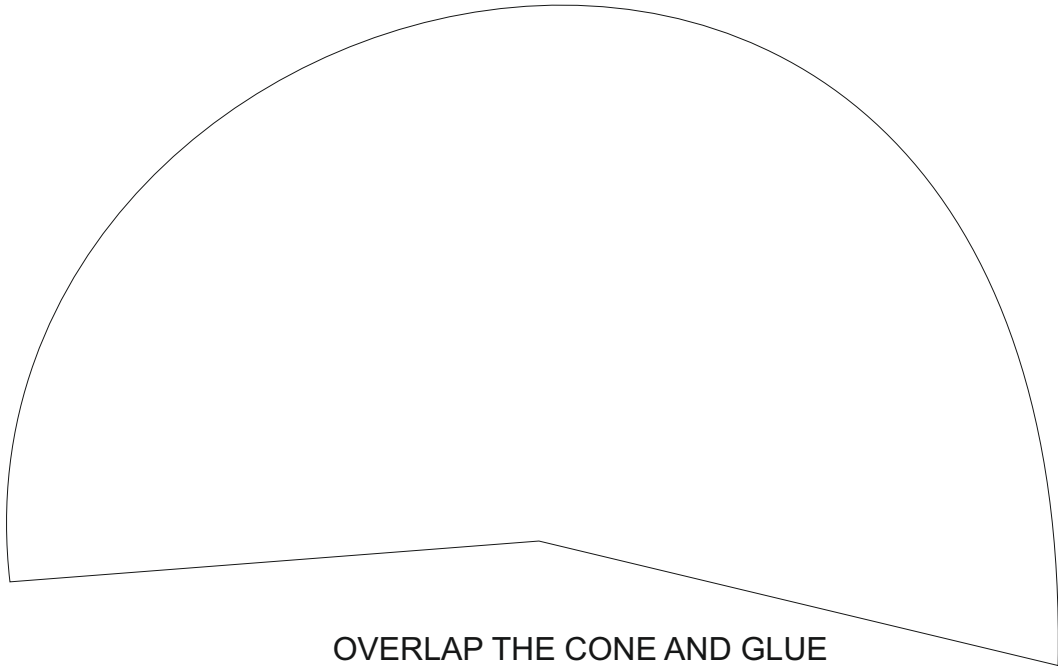
GLUE ARMS IN POSITION BEFORE FOLDING THE REST OF THE NET / DEVELOPMENT

ARM

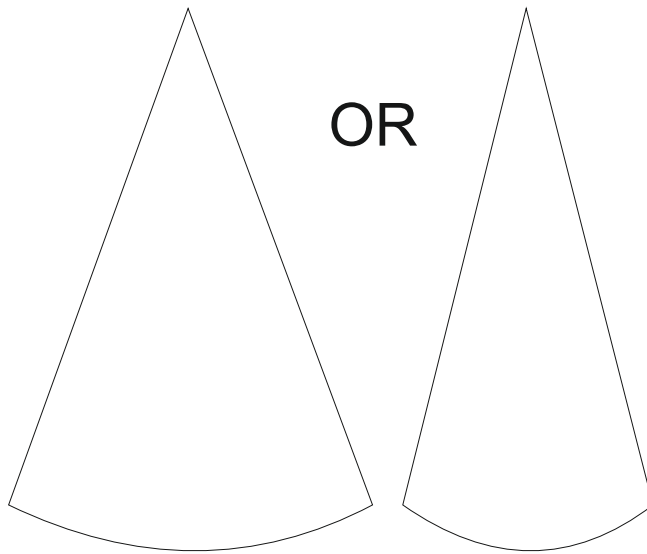


ARM





OVERLAP THE CONE AND GLUE  
THE EXCESS, PRODUCING THE  
WIDTH OF BASE/CIRCLE YOU  
WANT TO ACHIEVE.

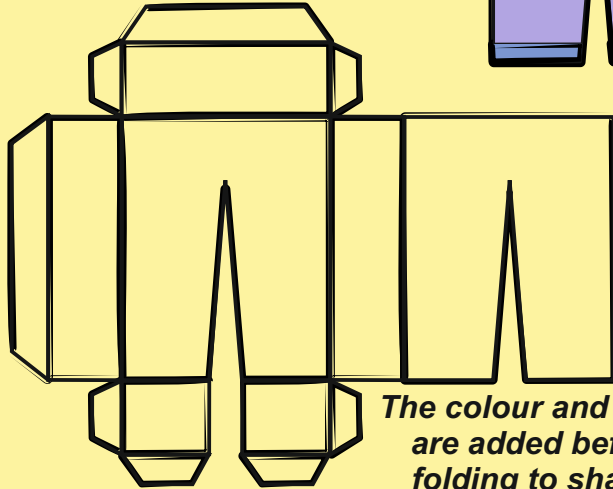
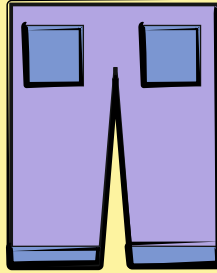


# FANTASY PAPER TOY CHARACTERS - FOUR PIECE DESIGN

WORLD ASSOCIATION OF TECHNOLOGY TEACHERS <https://www.facebook.com/groups/254963448192823/> [www.technologystudent.com](http://www.technologystudent.com) © 2017 V.Ryan © 2017

## 1 TROUSERS / LEGS

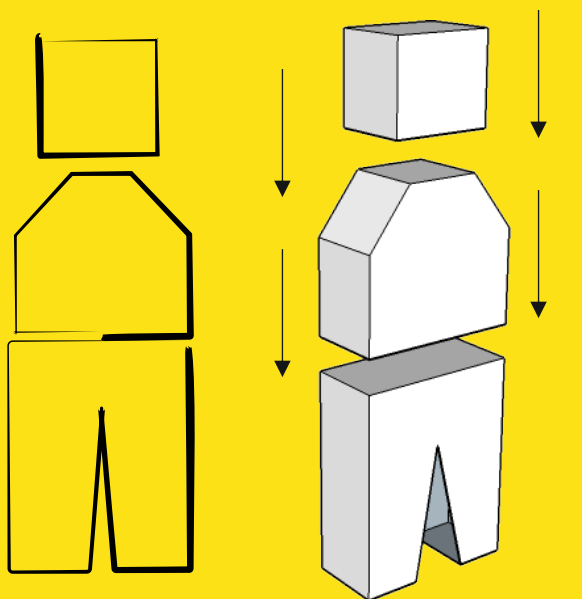
The colour scheme gives the impression that the character is wearing jeans.



The colour and detail are added before folding to shape.

## THE BASIC CONCEPT

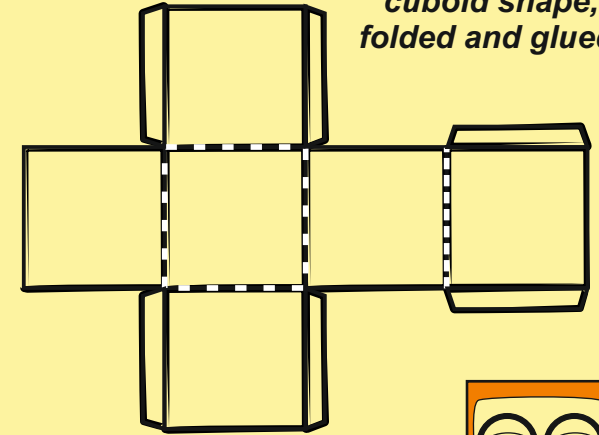
This is a four piece design. Nets / developments have been designed for the three main parts - the head, upper body and legs/trousers



TRY THE GRAPHICS SECTION OF [www.technologystudent.com](http://www.technologystudent.com) for detailed revision materials

## 2 HEAD

The head is a cuboid shape, folded and glued.

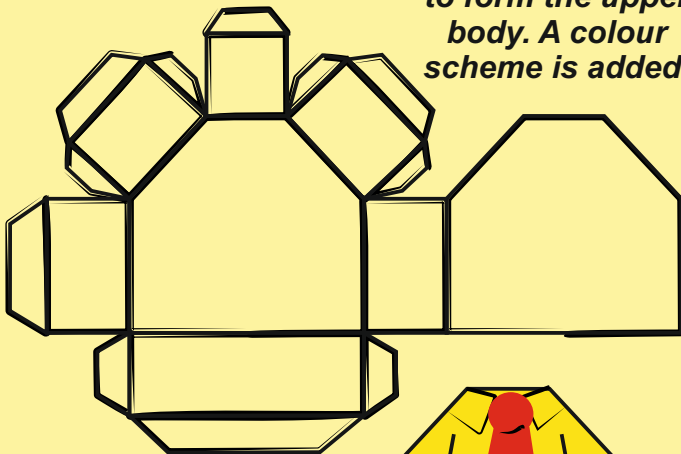


Facial characteristics are added with pencils, fine pens and even colour card.

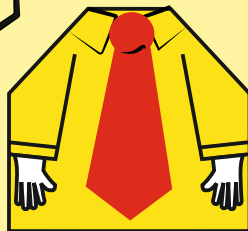


## 3 UPPER BODY

A complicated shape, but it folds to form the upper body. A colour scheme is added.

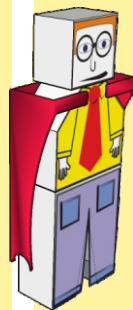


Detail can be drawn onto the front of the 3D shape, before it is glued together.



## 4 SUPER HERO CLOAK

Any appropriate design for a superhero can be drawn onto this shape. The 'cloak' folds round the character.

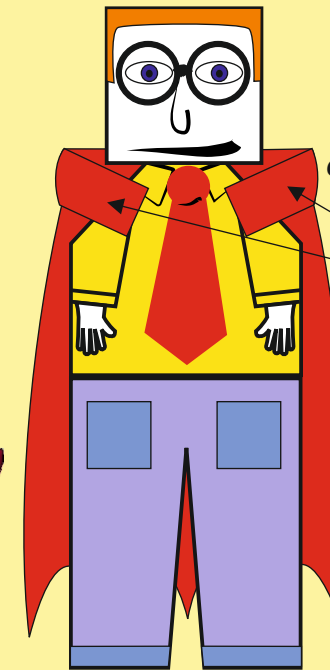


The final design:

The three main parts are glued together, producing a character that stands up.

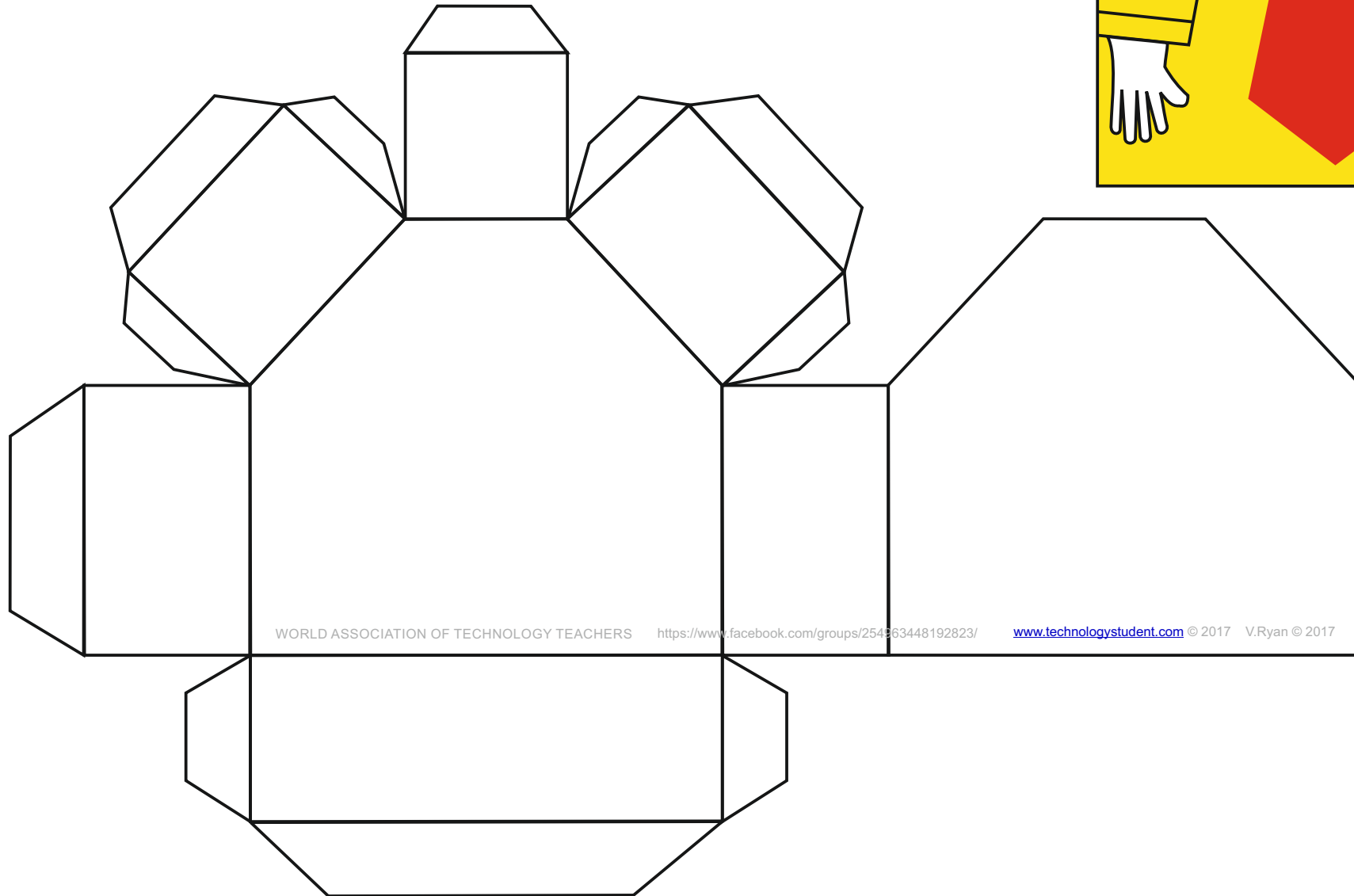
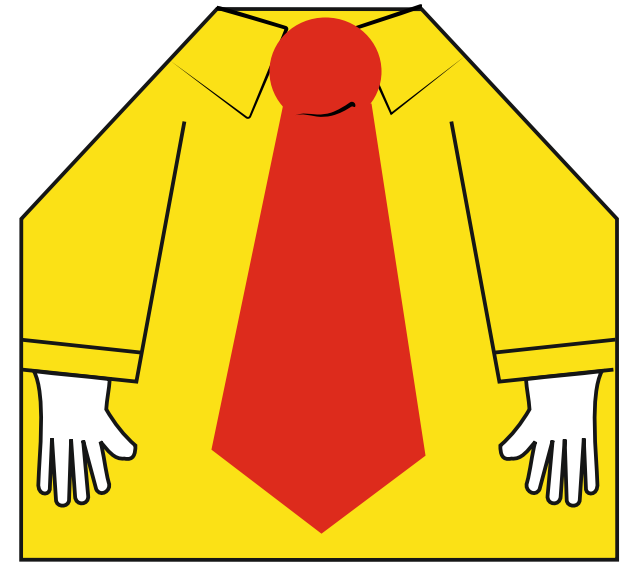
TABS

The cloak is simple wrapped round the character and the two tabs are glued on to the 'shoulders'.



# UPPER BODY NET / DEVELOPMENT

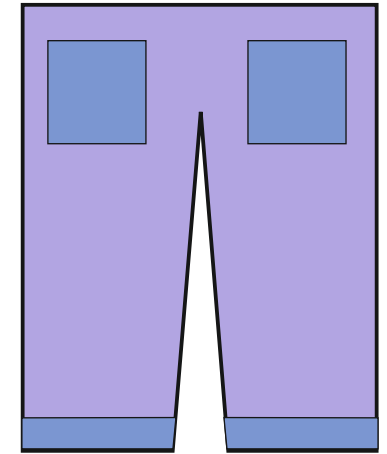
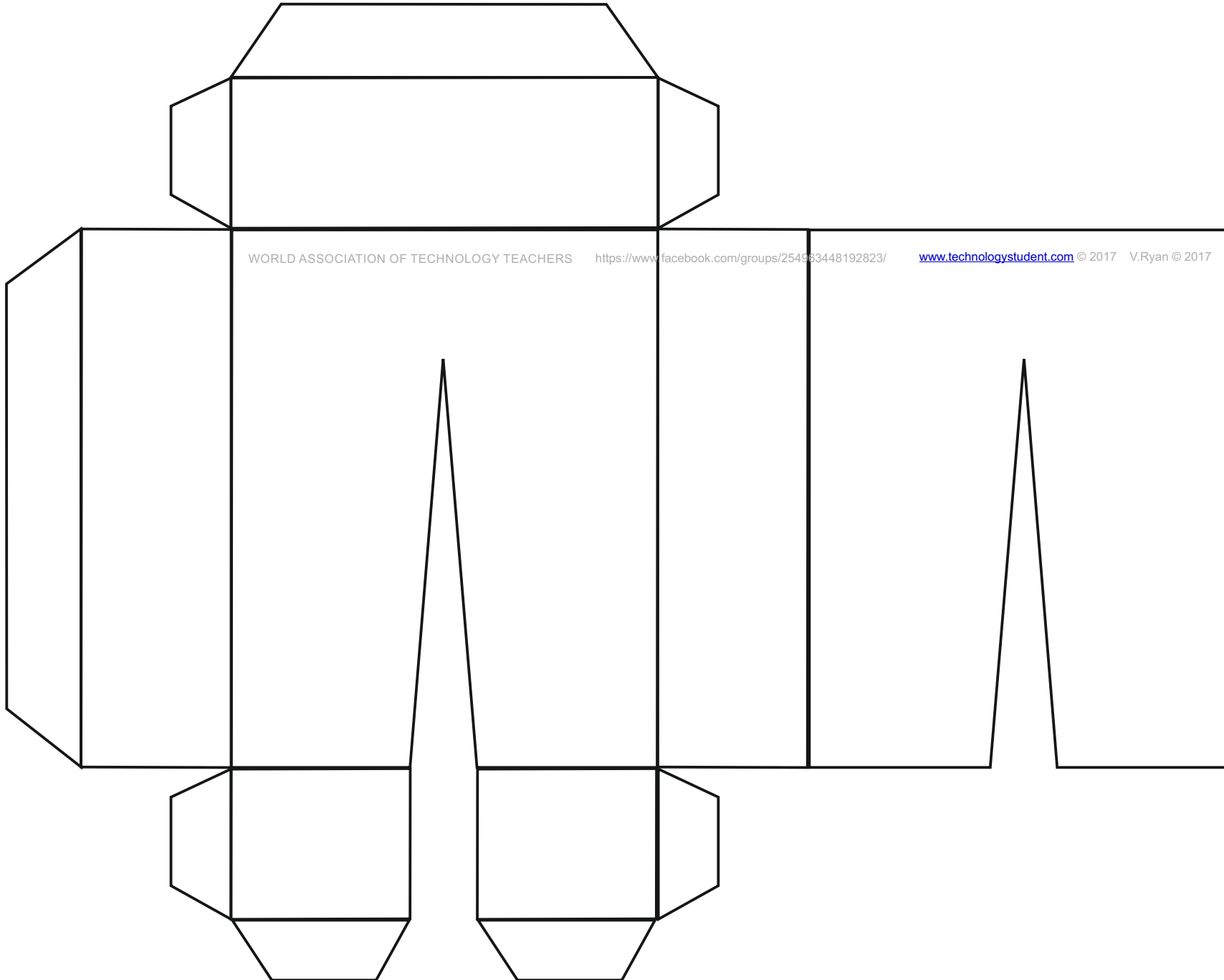
WORLD ASSOCIATION OF TECHNOLOGY TEACHERS <https://www.facebook.com/groups/254963448192823/> [www.technologystudent.com](http://www.technologystudent.com) © 2017 V.Ryan © 2017



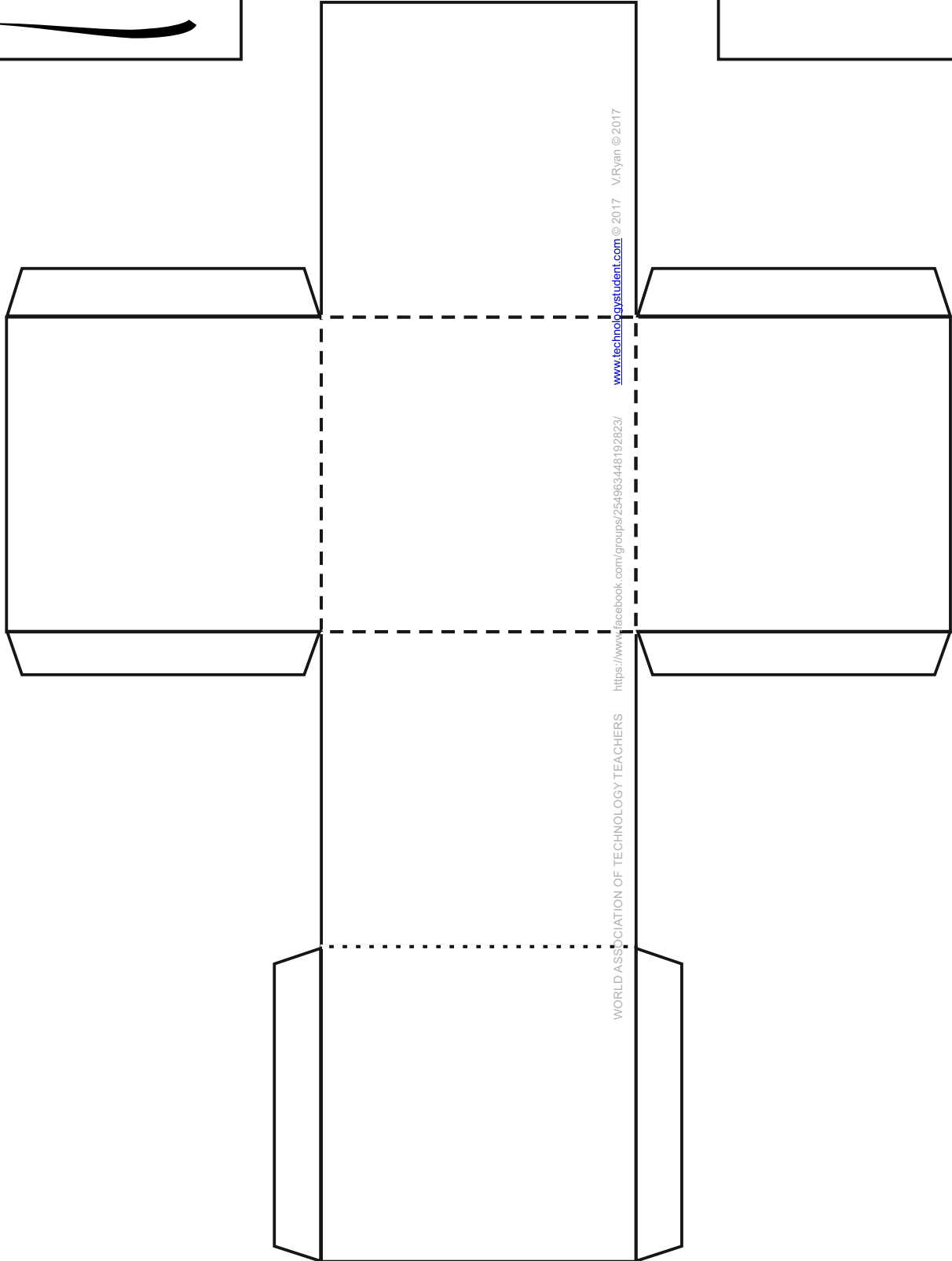
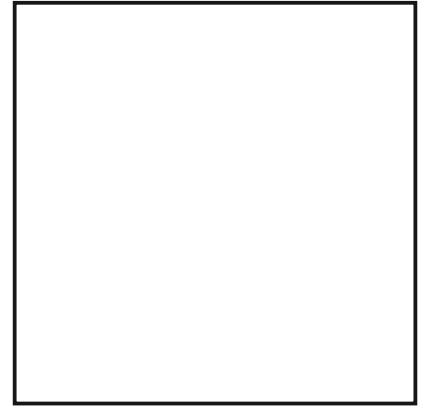
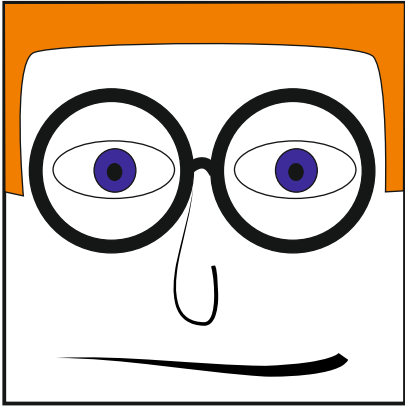
WORLD ASSOCIATION OF TECHNOLOGY TEACHERS <https://www.facebook.com/groups/254963448192823/> [www.technologystudent.com](http://www.technologystudent.com) © 2017 V.Ryan © 2017

# TROUSER / LEGS - NET / DEVELOPMENT

WORLD ASSOCIATION OF TECHNOLOGY TEACHERS <https://www.facebook.com/groups/254963448192823/> [www.technologystudent.com](http://www.technologystudent.com) © 2017 V.Ryan © 2017



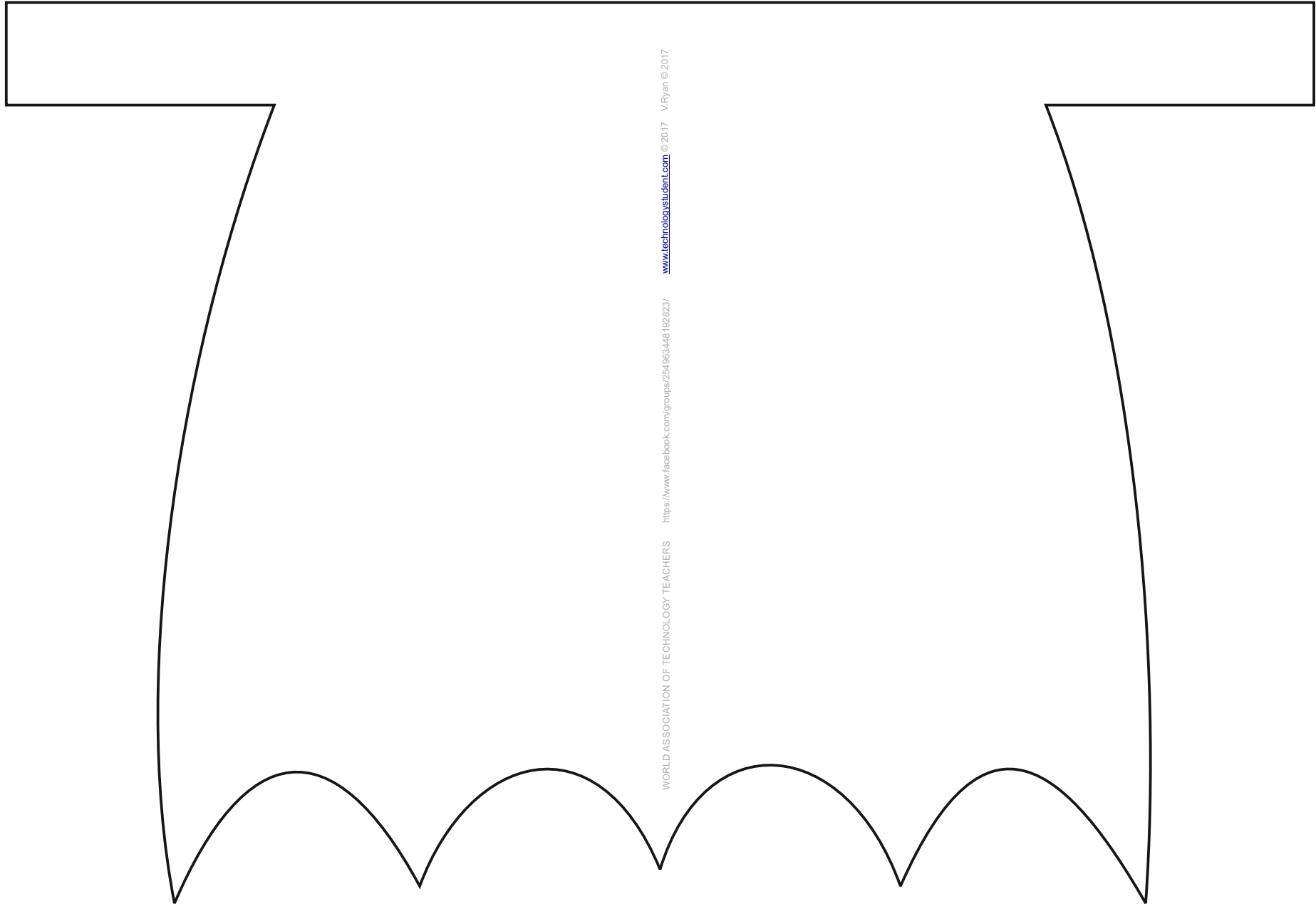
# HEAD NET / DEVELOPMENT



WORLD ASSOCIATION OF TECHNOLOGY TEACHERS <https://www.facebook.com/groups/254963448192823/> [www.technologystudent.com](http://www.technologystudent.com) © 2017 V.Ryan © 2017

# CLOAK NET / DEVELOPMENT

WORLD ASSOCIATION OF TECHNOLOGY TEACHERS <https://www.facebook.com/groups/254963448192823/> [www.technologystudent.com](http://www.technologystudent.com) © 2017 V.Ryan © 2017



[www.technologystudent.com](http://www.technologystudent.com) © 2017 V.Ryan © 2017

<https://www.facebook.com/groups/254963448192823/>

WORLD ASSOCIATION OF TECHNOLOGY TEACHERS

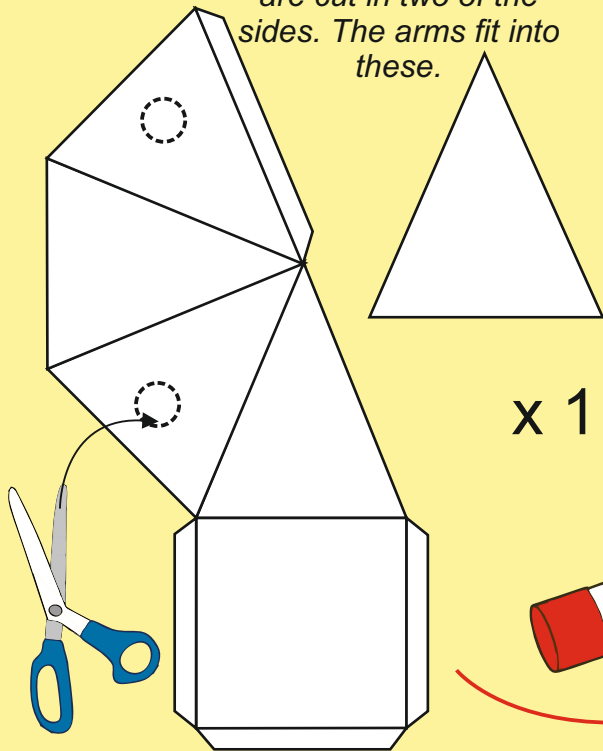


# FANTASY PAPER TOY CHARACTERS - SQUARE PYRAMIDS

WORLD ASSOCIATION OF TECHNOLOGY TEACHERS <https://www.facebook.com/groups/254963448192823/> [www.technologystudent.com](http://www.technologystudent.com) © 2017 V.Ryan © 2017

1

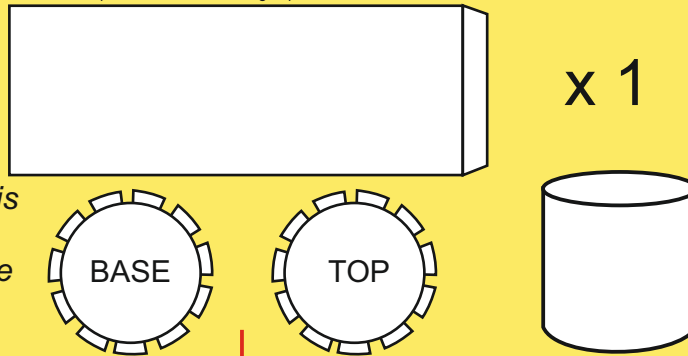
The main body is a square pyramid. Holes are cut in two of the sides. The arms fit into these.



x 1

2

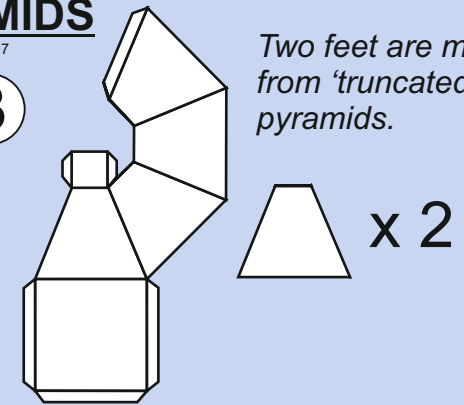
The head is a cylinder, with a base and top



x 1

3

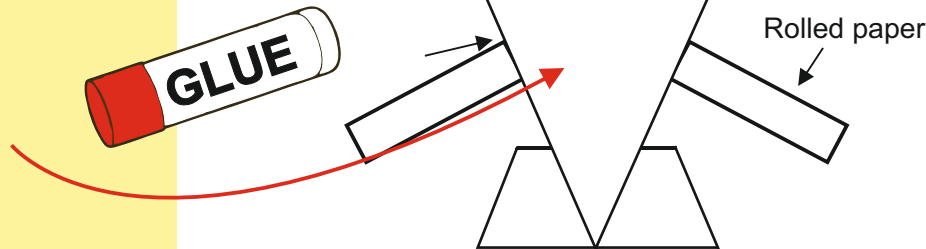
Two feet are made from 'truncated' pyramids.



x 2

Arms holes cut in two surfaces of the inverted pyramid

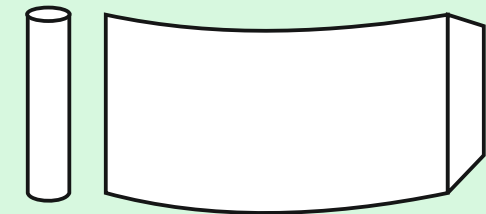
Use a pritt stick or an equivalent glue to fix the parts together.



4

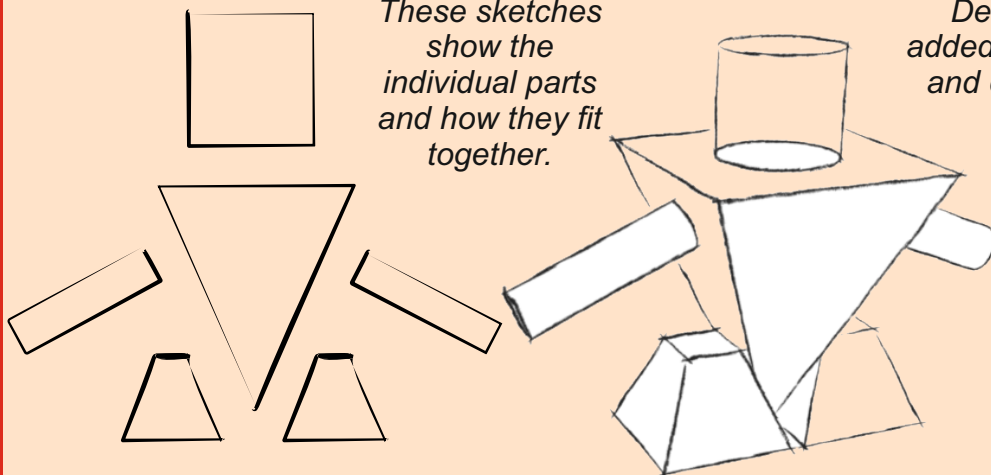
x 2

Each arm is a cylinder of paper, rolled and glued with the tab.

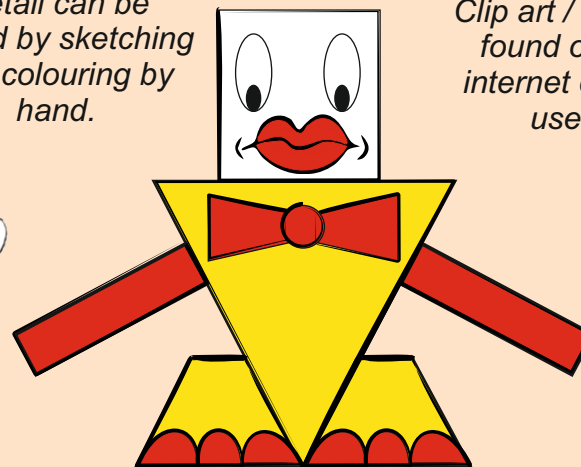


TRY THE GRAPHICS SECTION OF [www.technologystudent.com](http://www.technologystudent.com) for detailed revision materials

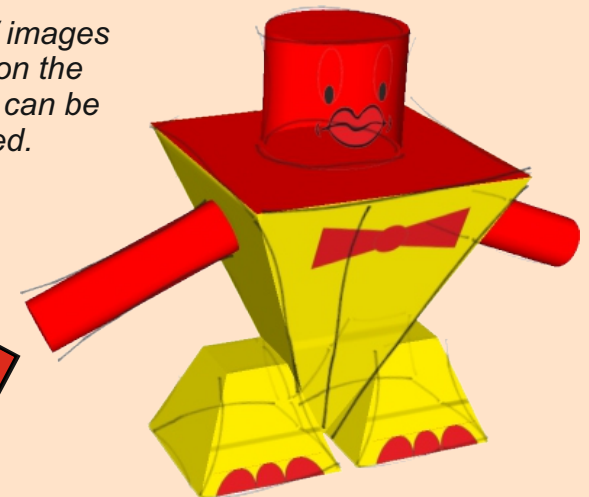
These sketches show the individual parts and how they fit together.



Detail can be added by sketching and colouring by hand.

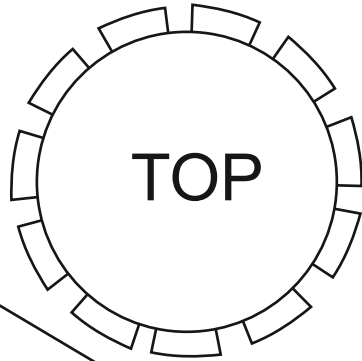


Clip art / images found on the internet can be used.

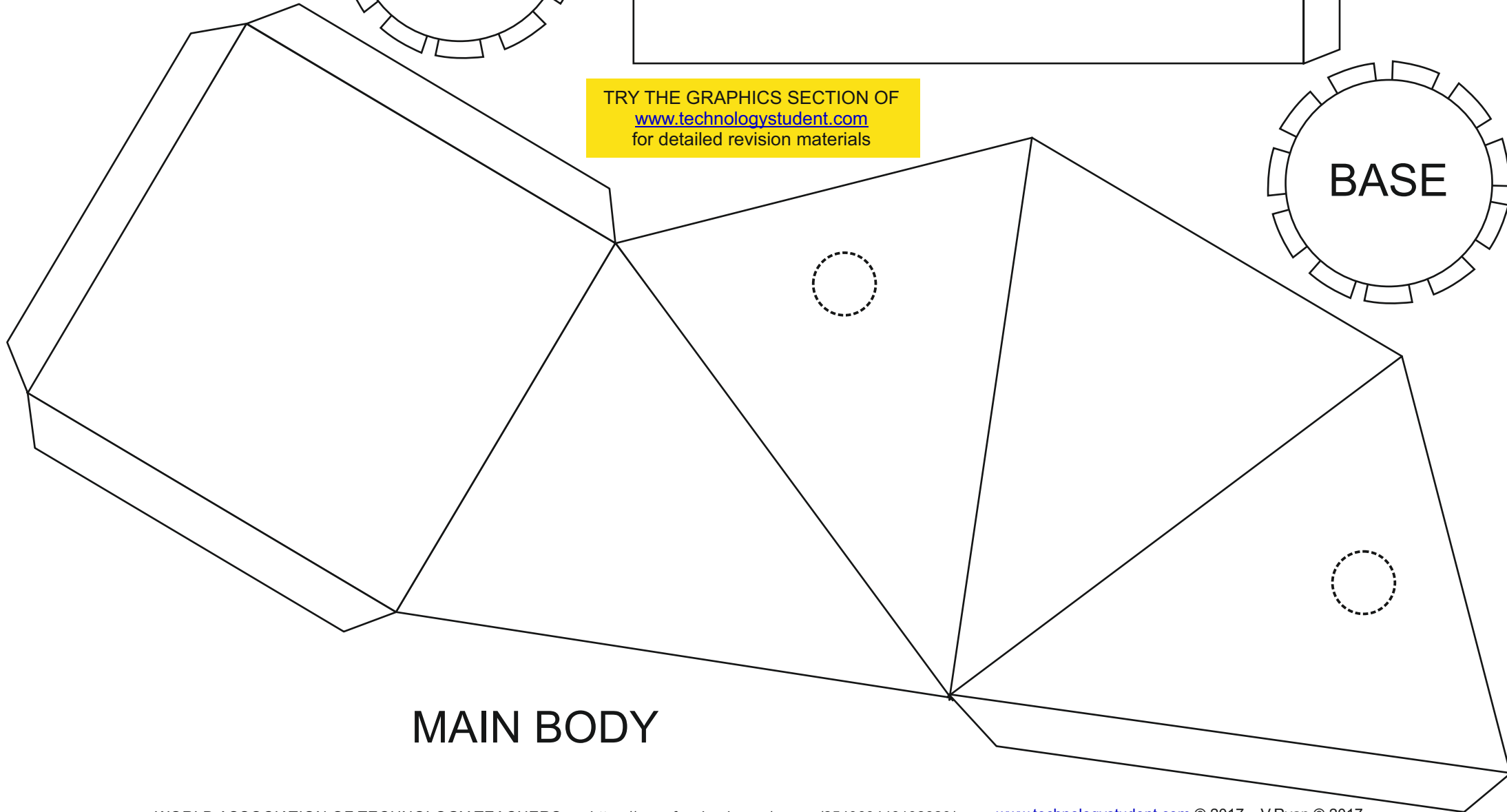
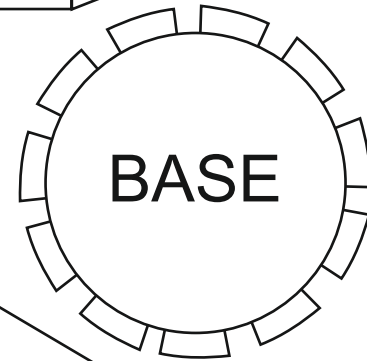


# DESIGN 3 - PARTS SHEET 1

HEAD



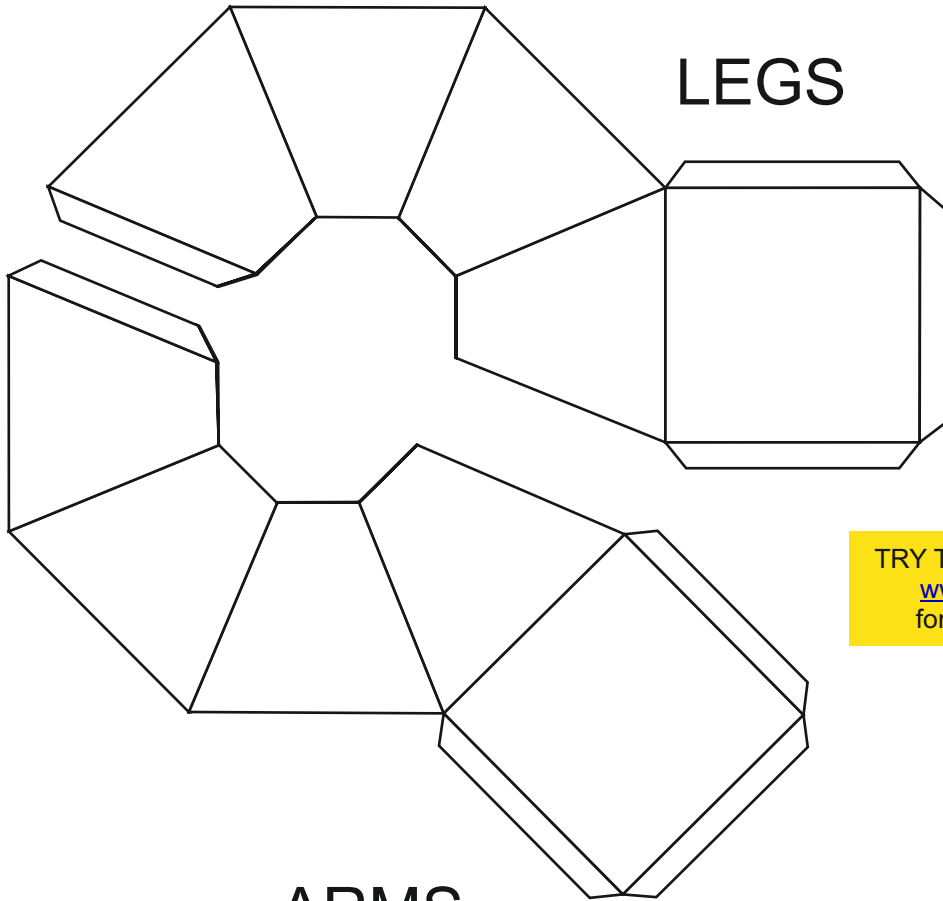
TRY THE GRAPHICS SECTION OF  
[www.technologystudent.com](http://www.technologystudent.com)  
for detailed revision materials



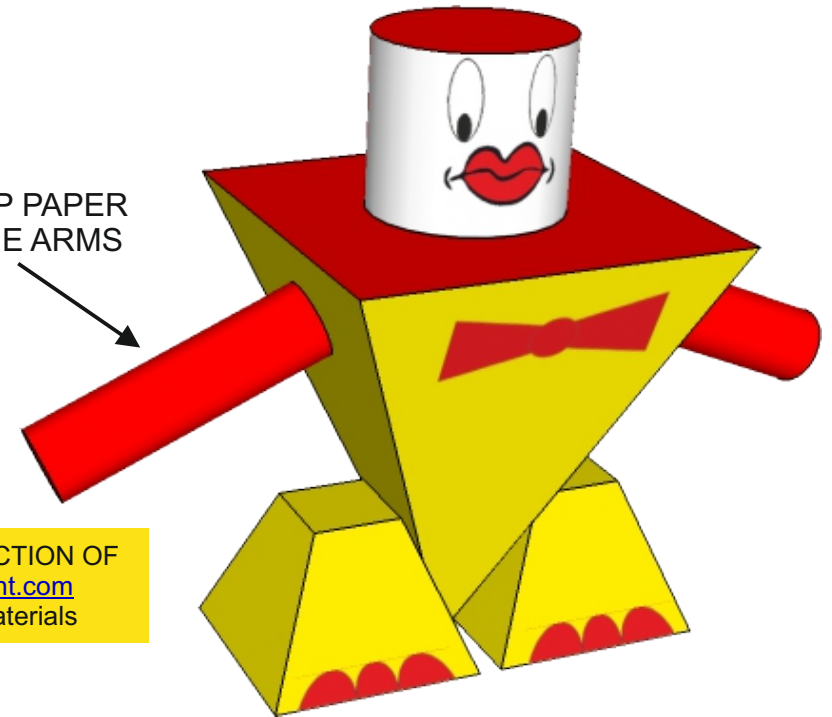
MAIN BODY

# DESIGN 3 - PARTS SHEET 2

## LEGS

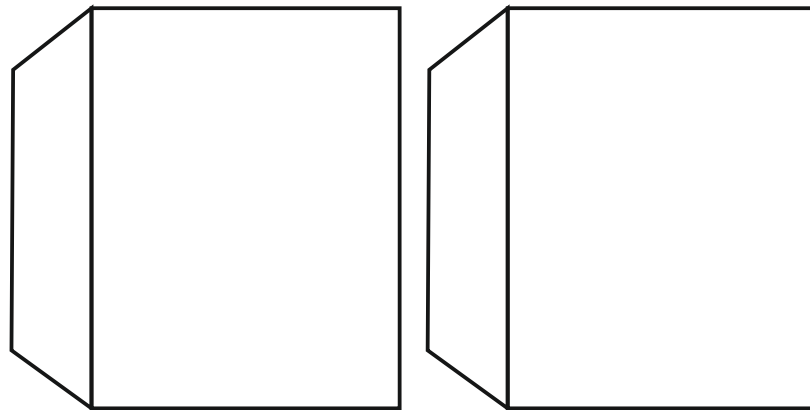


ROLL UP PAPER FOR THE ARMS



TRY THE GRAPHICS SECTION OF [www.technologystudent.com](http://www.technologystudent.com) for detailed revision materials

## ARMS



## REQUIRED EQUIPMENT



# FANTASY PAPER TOY CHARACTERS - BASIC POPUP BOOK VERSION

1

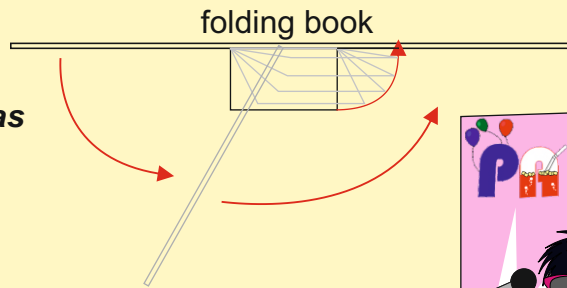
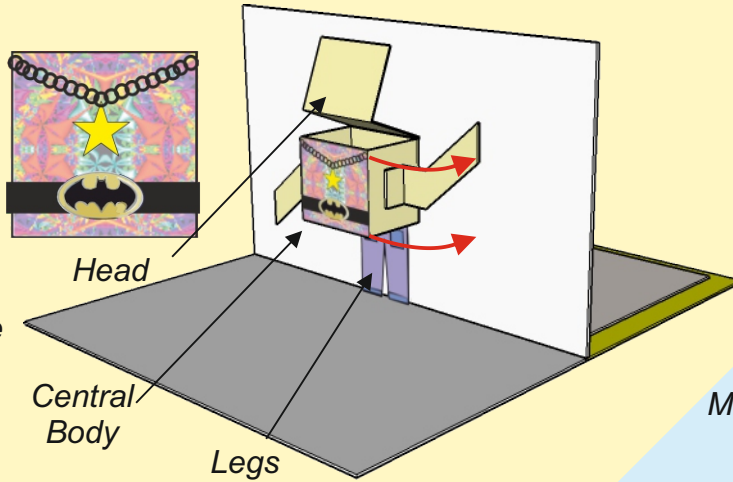
This is a simple pop-up version of the paper character. The central 'body' folds down.

The arms also fold flat.

The legs are drawn on the surface of the card booklet.

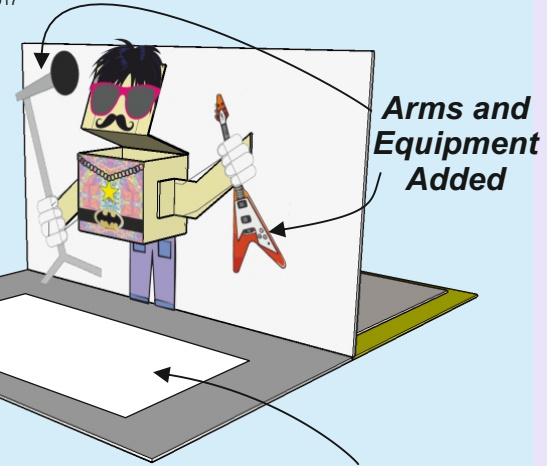
The head folds as shown on the diagram.

The booklet folds flat as shown opposite.



2

The detail to the arms and head have been added in this sketch. These also fold flat, as the booklet is shut.



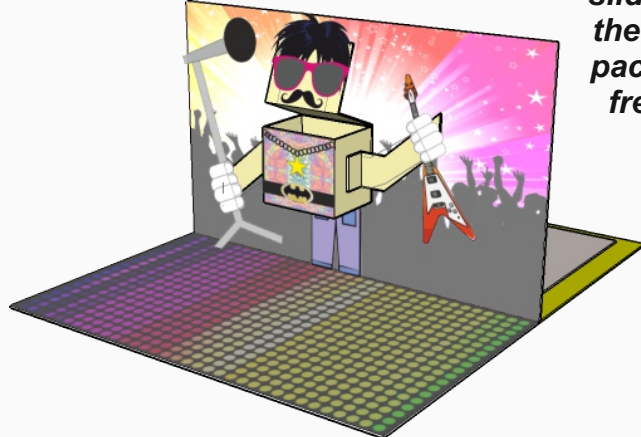
A story about the character could be printed and placed here.

The space could be for a child to write a story, about the character.

TRY THE GRAPHICS SECTION OF [www.technologystudent.com](http://www.technologystudent.com) for detailed revision materials

3

A disco floor and party background have been added, to complete the design.

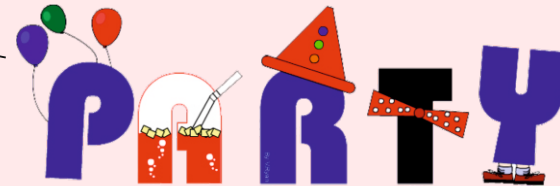


4

The popup character booklet 'slides' into the cereal pack, as a free gift



5



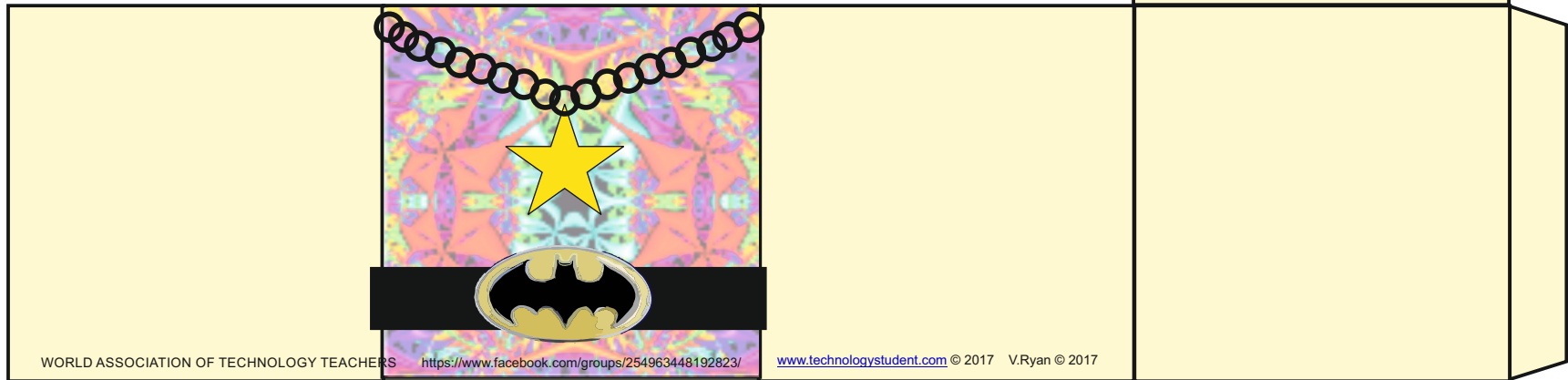
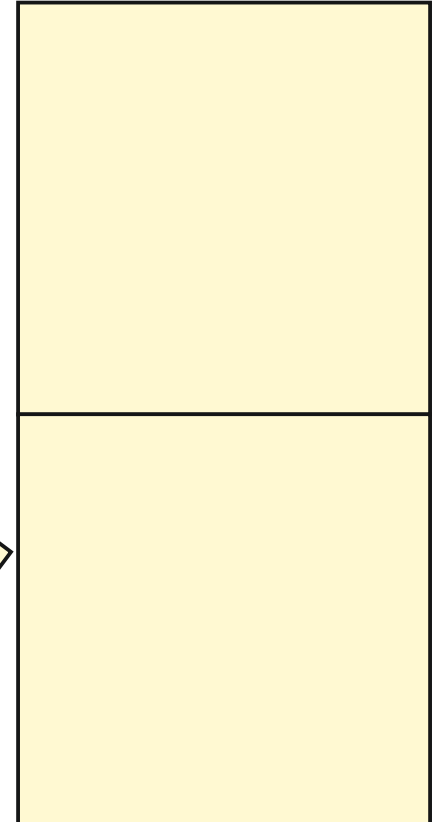
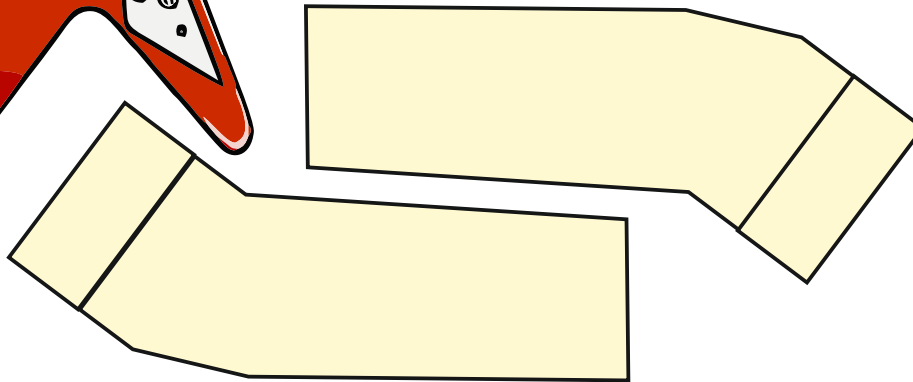
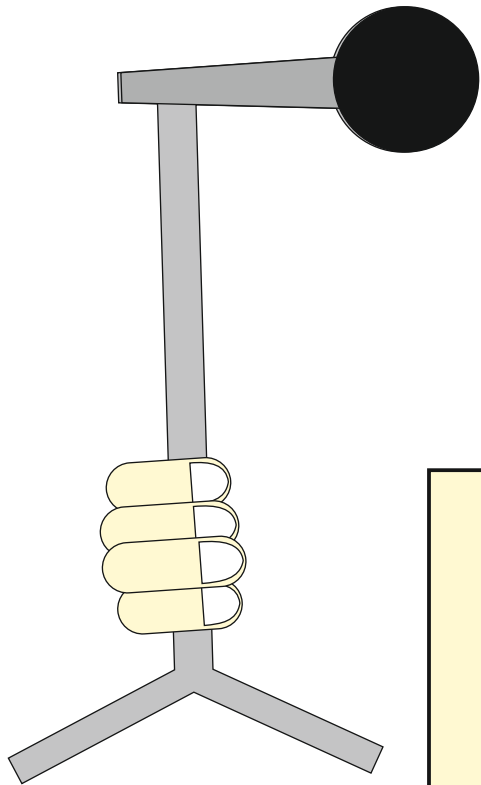
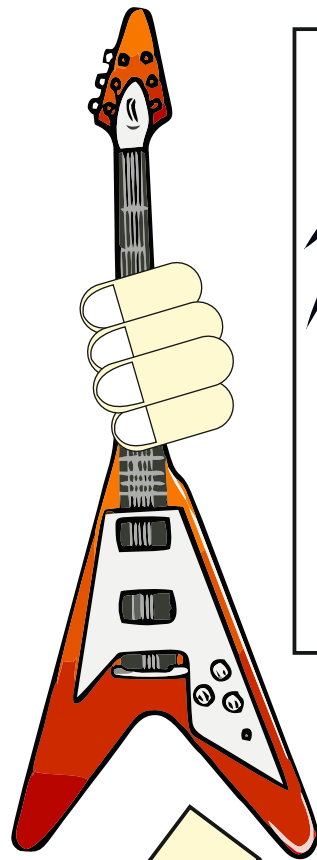
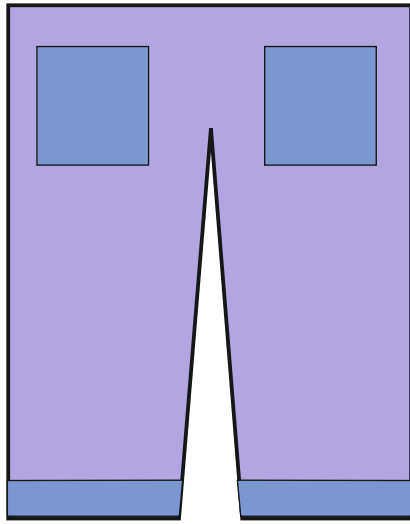
Party style writing is applied to the booklet and the 'fun' character is also seen on the front cover.

6

THE FINAL CHARACTER

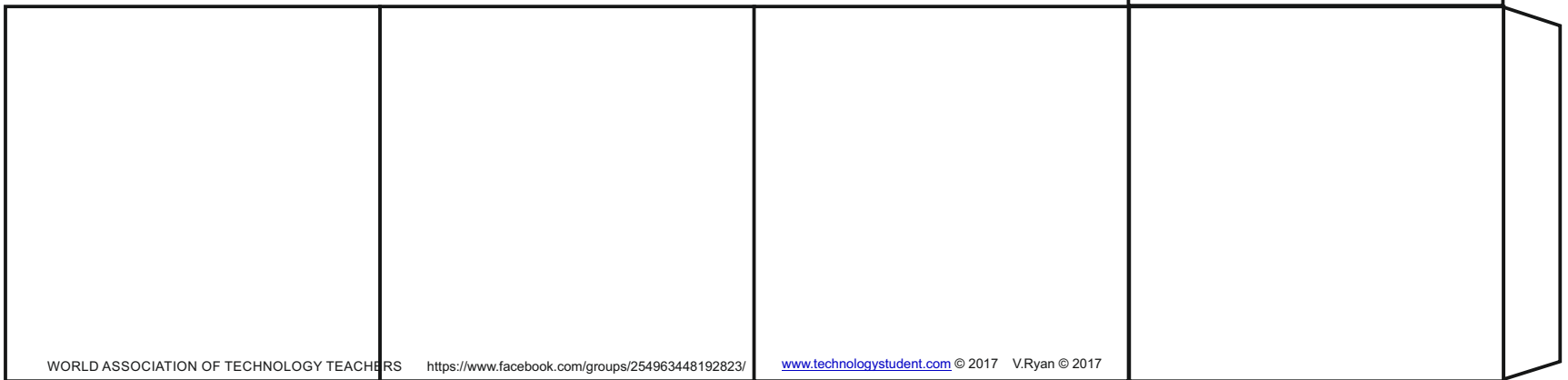
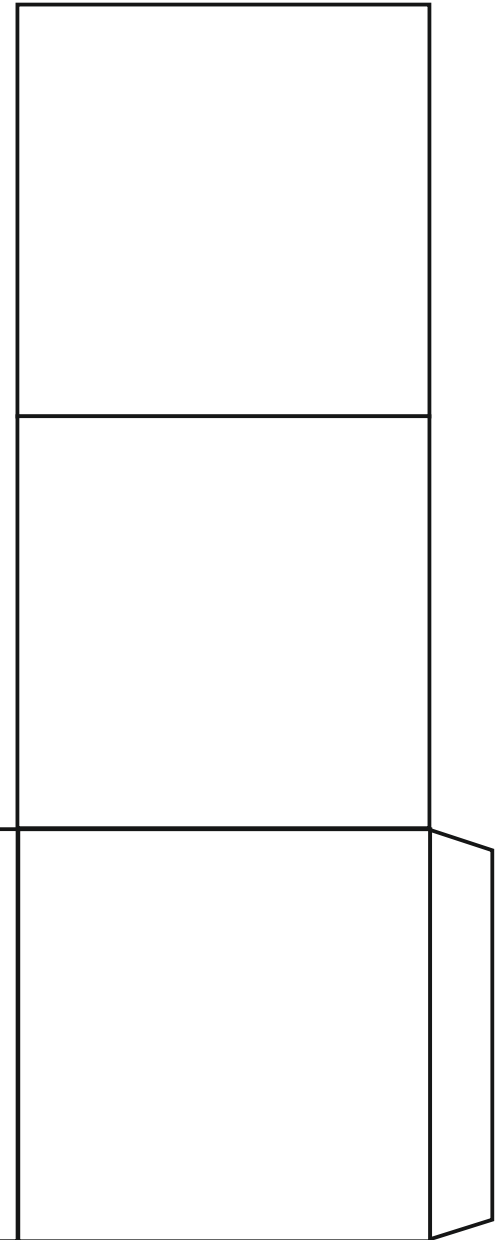
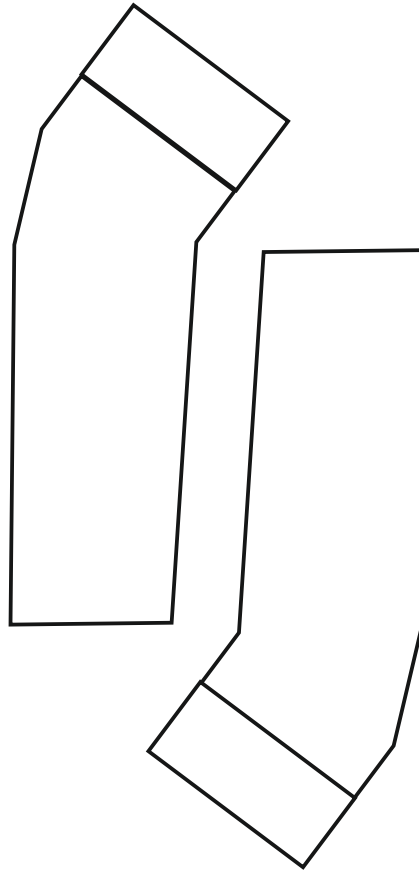
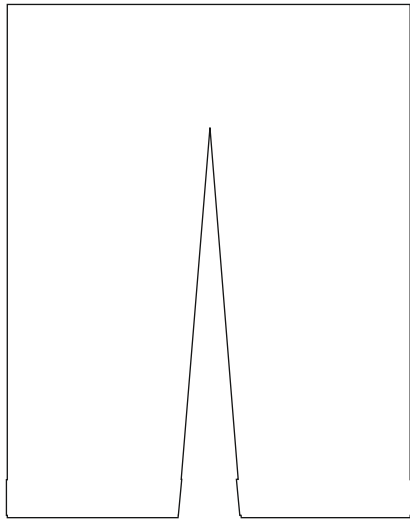


"FREE FANTASY PAPER CHARACTER INSIDE"



# FANTASY PAPER TOY CHARACTERS POP-UP VERSION

ADD YOUR OWN DECORATION





FANTASY PAPER  
TOY CHARACTERS  
POP-UP VERSION

